



CLEMCO
The Performance
System

TECHNICAL DATA SHEET

Note: For safe, efficient blasting, read and follow the owner's manual and seek training for everyone who will use this equipment.

Purpose

The Apollo 20 HP is designed for use with compressed air systems. It meets OSHA standards for respiratory protection and noise limitations. The Apollo 20's full-helmet design and heavy-duty cape protect the blast operator's head, neck, shoulders, and chest from rebounding abrasive.

Requirements for Operation

The following items are required or recommended for operation, but are not included with this respirator:

- Source of Grade D (or better quality) breathing air providing 7 to 15 cfm at 65 to 100 psi (if CAT or CCT is used, increase cfm to 20)
- A breathing air filter (such as the Clemco CPF) to remove oil, moisture, particles, and odors
- Carbon monoxide monitor and alarm (such as the Clemco CMS-2)
- $\frac{3}{8}$ -inch approved respirator hose from the breathing air filter to the helmet connection
- Protective clothing, gloves, and shoes suitable for a heavy construction site
- Primary hearing and eye protection

Description of Operation

The Apollo 20 includes a single-shell construction helmet supported by an adjustable suspension. The operator adjusts the suspension to fit, then installs it in the helmet. A chin strap holds the helmet firmly in place. The rectangular window provides a clear field of view. An inner fixed lens and one middle lens seal out dust and abrasive.

Up to three lightweight, disposable outer lenses, held in place by a hinged frame, protect the middle lens from pitting. As the outermost disposable lens becomes pitted, it can be torn off to expose the next lens.

Description

The Apollo 20 HP is a Type CE, continuous-flow, supplied-air respirator for abrasive blasting, to be used with compressed air systems. The high visibility red single-shell helmet has a box-front window, and a protective cape.



The helmet can be purchased with one of the following:

- Constant-Flow Connector — fixed air flow (no adjustment possible)
- Air Control Valve — to adjust flow rate of incoming air
- Cool Air Tube — to cool incoming air
- Climate Control Tube — to cool or warm incoming air as needed

With all but the Constant-Flow Connector, the operator can adjust the flow of air. None of the valves can be adjusted beyond pre-set minimum and maximum settings specified by OSHA.

A flexible breathing tube between the valve and the helmet allows free movement of the operator's head. This tube contains specially-formulated sound-deadening materials that help the respirator comply with 80 dBA maximum noise level while allowing free air flow. For maximum protection while blasting, the operator should wear ear plugs or other suitable hearing protection and safety glasses or goggles.

The air enters the helmet at the rear, travels through a sound-attenuating distribution system at the top, and

Apollo 20 HP Supplied-Air Respirator

Stock No. 20975,
21419, 21420 & 21421

circulates about the operator's face. The incoming air maintains positive pressure inside the helmet, so exhaled air exits via the knit collar. Maintaining positive pressure inside the helmet helps keep out potentially harmful dust and abrasive.

Advantages

- Box-front window features economical replacement lenses
- Sound-attenuating, air-distribution channel
- Lightweight construction
- Molded-in carrying handle
- Allows operator to wear supplementary hearing and primary eye protection

Approvals and Certifications

The Apollo 20 HP helmet is a NIOSH-approved, type CE respirator (approval number TC-19C-338) and is recognized by OSHA as having an assigned protection factor (APF) against lead dust of 1000 times the permissible exposure limit (PEL).

NOTE: Prior to use, ensure that the Apollo, type CE, supplied-air respirator is appropriate for your specific blasting conditions and requirements.

Related Clemco Literature

Description	Stock No.
Contractor Series Catalog	21385
Abrasive Blasting Safety Practices	22090
Blast Off 2	09294
Operator Safety Equipment Product Study	07764
Apollo 20 HP Owner's Manual	21990

Options and Accessories

CPF-20 Air Filter (for one or two operators)	03578
CPF-80 Air Filter (for up to four operators)	03527
Carbon monoxide alarm, CMS-2	22894
Heavy cotton/leather blast suit..... S (08920), M (08921), L (08922), XL (08923)	
Seasonal cotton/nylon blast suit.... M (22914), L (22915), XL (22916), XXL (22917)	
Leather gloves	02243

Respirator Systems and Accessories

NOTE: The respirators listed DO NOT include respirator hose.
Respirator hose must be ordered separately.

(-) Apollo 20 HP, w/Constant-Flow Connector.	20975
(-) Apollo 20 HP, w/Air Control Valve	21419
(-) Apollo 20 HP, w/Cool-Air Tube	21420
(-) Apollo 20 HP, w/Climate Control Tube	21421
(-) Constant-Flow Connector with belt.....	21422
(-) Air Control Valve with belt	04440
(-) Cool-Air Tube with belt	04410
(-) Climate Control Tube with belt	04411
(-) Low pressure conversion kit.	
Converts HP helmet to LP helmet	22680

Replacement Parts

1. Constant-Flow Connector, HP, without belt	21415
2. Belt	04430
3. Respirator hose, 3/8" x 25 ft (alternate), includes items 7 and 8	04397
4. Respirator hose, 3/8" x 50 ft (alternate), includes Items 7 and 8	04415
5. Respirator hose, 3/8" x 100 ft (alternate), includes items 7 and 8	04398

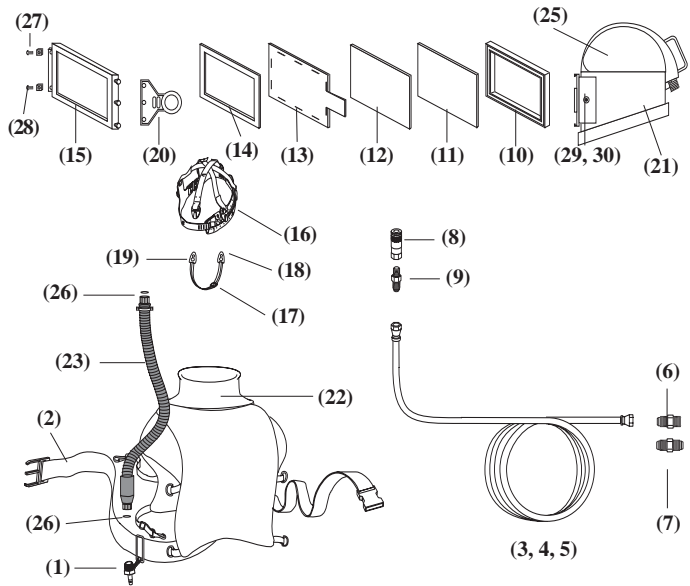
Packaging

Respirators

Stock No.	Dimensions	Weight
20975	13 1/2" x 13" x 11"	8 lb
21419	(same)	8 lb
21420	(same)	8.9 lb
21421	(same)	9.4 lb

Respirator Hose (in poly bag)

Stock No.	Dimensions	Weight
04397 (25 ft)	10" x 10" x 3"	2.8 lb
04415 (50 ft)	12" x 12" x 5"	5.8 lb
04398 (100 ft)	14" x 14" x 5"	11.6 lb



Item	Description	Stock No.
6.	Adaptor, 3/8" hose to 3/8" pipe	00022
7.	Union, 3/8" hose to 3/8" hose	01020
8.	Disconnect, 1/4" female	00025
9.	Adaptor, 3/8" hose to 1/4" pipe	01019
10.	Gasket, molded window	99996
11.	Inner lens, 4 5/8" x 6 5/8", package of 5	21409
12.	Middle lens, 5" x 7", package of 5	21410
13.	Cover lens, perforated, package of 25	21411
14.	Gasket, lens frame	21041
15.	Lens frame	20976
16.	Suspension	10532
17.	Chin strap	04460
18.	Chin strap holder, 2 required	21696
19.	Screw, 8-32 x 1/2" ph hd, 2 required	21119
20.	Latch, lens frame, rubber	21298
21.	Cape attachment strap	10534
22.	Cape with inner collar	21301
23.	Breathing tube assembly w/swivel ends	22811
24.	Air channel partition kit (not shown)	21118
25.	Button, rubber latch	21040
26.	O-ring, 11/16" ID x 7/8" OD, 2 required	22815
27.	Nut, lens frame	90041
28.	Screw, lens frame	90295
29.	Screw, 6-32 x 1/2" sm	21402
30.	Screw, 6-32 x 1" sm	21403

Authorized Distributor:

ISO 9001-2000 certified. Clemco is committed to continuous product improvement. Specifications are subject to change without notice.

© 2004 Clemco Industries Corp. • One Cable Car Drive • Washington, MO 63090 • Phone (636) 239-4300 • Fax (636) 239-0788

Stock No. 21959

www.clemcoindustries.com

Job No. 1195-1295 • Date of Issue: 06/98, Rev. B: 08/04