



Basket Blasters

Section E: Table of Contents

BB2-3K & BB4-3K Models E1

BB2-3K & BB4-3K Options

BB2-3K Basket Blasters E2

BB4-3K Basket Blasters E4

BB2-3K & BB4-3K Parts

Electrical Options E6

Cabinet Assembly, BB2-3K E7

Cabinet Assembly, BB4-3K E8

Electrical Assembly E10

Reclaimer E10

Dust Collectors E11

Blower (Fans & Motors) E13

Ducting/Hoses E14

Pipe String E14

Blast System E15

BBO-1 & BBO-2 Models E19

BBO-1 & BBO-2 Options E19

BBO-1 & BBO-2 Parts

Electrical Options E19

Cabinet Assembly E20

Dust Collector E21

Blast guns & nozzles E22

Models: BB2-3K & BB4-3K Basket Blasters

MODEL DESCRIPTION	PART NUMBER	NUMBER OF BLAST GUNS	DUST COLLECTION	BLOWER MOTOR	SHIPPING WEIGHT
BB2-3K DCM-80A	109001	2 standard	DCM-80A	1 hp	1641 lbs
BB2-3K DCM-200	109011	2 standard	DCM-200	1½ hp	2071 lbs
BB2-3K CDC-6	109051	2 standard	CDC-6	1½ hp	2191 lbs
BB4-3K DCM-200	110001	3 standard	DCM-200	1½ hp	2186 lbs
BB4-3K CDC-6	110051	3 standard	CDC-6	1½ hp	2306 lbs
BB4-3K 200A	110011	3 standard	DCM-200A	2 hp	2221 lbs
BB4-3K CDC-9	110052	3 standard	CDC-9	2 hp	2341 lbs

Note: 600 CFM standard

Never use silica sand in any Empire equipment.



Options: BB2-3K Basket Blaster

BB2-3K Basket Blasters (400 and 600 CFM)

(All systems supplied with polyurethane spray-lined 600 CFM reclaimer)

	FACTORY INSTALLED	CUSTOMER INSTALLED	SEE PAGE
Single-Phase Electrical Options (400 CFM)			
Single Source:			
230 volt, 60 hertz for 1 horsepower motor	141072	NA	E6
Three-Phase Electrical Options (400 CFM)			
Single Source:			
208 volt, 60 hertz	140071	NA	E6
460 volt, 60 hertz	140074	NA	E6
575 volt, 60 hertz	140075	NA	E6
380 volt, 50 hertz	140073	NA	E6
Single-Phase Electrical Options (600 CFM)			
Single Source:			
230 volt, 60 hertz for 1½ horsepower motor	141052	NA	E6
Three-Phase Electrical Options (600 CFM)			
Single Source:			
208 volt, 60 hertz	140051	NA	E6
460 volt, 60 hertz	140054	NA	E6
575 volt, 60 hertz	140055	NA	E6
380 volt, 50 hertz	140053	NA	E6
Cabinet Extended-Wear Options			
Curtain for rear wall	140571	140571	E16
Nozzle, 5/16" boron (two required)	502081	502081	E15
PVC-coated basket	509281	509281	E16
Window protector, plastic	509191	509191	E16
Window protector, screen	509201	509201	E16
Reclaimer Extended-Wear Options (600 CFM)			
Ultrawear lining	526183	N/A	E10
Cabinet Options			
Automatic blow-off cycle	140044	NA	E16
Basket-end covers	140496	140496	E16
Basket with 1/8" diameter perforations for small parts (Deduct standard BB2 basket PN 767131 if factory installed.)	767151	767151	E16
End-of-cycle light	170051	NA	E16
Magnetic separator	511572	511572	E16
Rubber kick flights	140566	140998	E16
Safety matting (specify length)	509002	509002	E16
Vibrating reclaimer screen assembly	140335	140419	E16
Vibrating shed sheet	140572	140572	E16

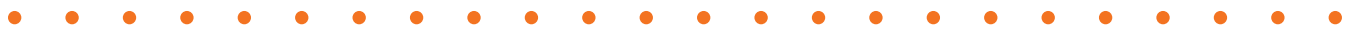
continued on next page



Options: BB2-3K Basket Blaster

BB2-3K Basket Blasters—continued

	FACTORY INSTALLED	CUSTOMER INSTALLED	SEE PAGE
Dust Collector Options for DCM-80A (400 CFM)			
Bag shaker, automatic electrical, 115 volts	140340	140390	E17
Bag shaker, automatic pneumatic	140685	140686	E17
HEPA filter	140215- DCM80A	140215- DCM80A	E17
HEPA filter, pressure differential gauge assembly	140221	140221	E17
Leg-extension kit	140170	140170	E17
Lid assembly for 55-gallon drum	140255	140255	E17
Manometer	140344	140398	E17
Sound attenuator/damper	140361	140361	E17
Dust Collector Options for DCM-200 (600 CFM)			
Bag shaker, automatic electrical, 115 volts	140340	140390	E17
Bag shaker, automatic pneumatic	140683	140684	E17
HEPA filter	140215	140215	E17
HEPA filter, pressure differential gauge assembly	140221	140221	E17
Leg-extension kit	140180	140180	E17
Lid assembly for 55-gallon drum	140255	140255	E17
Manometer	140344	140398	E17
Sound attenuator/damper	140361	140361	E17
Dust Collector Options for CDC-6 (600 CFM)			
HEPA filter	140215	140215	E18
HEPA filter, pressure differential gauge assembly	140221	140221	E18
Photohelic cartridge cleaning, automatic pulse	140900	140900	E18
Leg-extension kit	140185	140185	E18
Lid assembly for 55-gallon drum	140155	140155	E18
Sound attenuator	140361	140361	E18
Higher Volume Ventilation Options			
900 CFM equipment	Call factory	Call factory	
1200 CFM equipment	Call factory	Call factory	





Options: BB4-3K Basket Blaster

BB4-3K Basket Blasters (600 and 900 CFM)

	FACTORY INSTALLED	CUSTOMER INSTALLED	SEE PAGE
Single-Phase Electrical Options (600 CFM)			
Single Source:			
230 volt, 60 hertz for 1½ horsepower motor	141052	NA	E6
Three-Phase Electrical Options (600 CFM)			
Single Source:			
208 volt, 60 hertz	140051	NA	E6
460 volt, 60 hertz	140054	NA	E6
575 volt, 60 hertz	140055	NA	E6
380 volt, 50 hertz	140053	NA	E6
Three-Phase Electrical Options (900 CFM)			
Single Source:			
208 volt, 60 hertz	140091	NA	E6
460 volt, 60 hertz	140094	NA	E6
575 volt, 60 hertz	140095	NA	E6
380 volt, 50 hertz	140093	NA	E6
Cabinet Extended-Wear Options			
Curtain for rear wall	140571	140571	E16
Nozzle, 5/16" boron (three required)	502081	502081	E15
PVC-coated basket	509171	509171	E16
Window protector, plastic	509191	509191	E16
Window protector, screen	509201	509201	E16
Reclaimer Extended-Wear Options (600 CFM)			
Ultrawear lining	526183	N/A	E10
Reclaimer Extended-Wear Options (900 CFM)			
Ultrawear lining	526193	N/A	E10
Cabinet Options			
Automatic blow-off cycle	140034	NA	E16
Basket-end covers	140496	NA	E16
Basket with 1/8" diameter perforations for small parts (Deduct standard BB4 basket PN 510651 if factory installed.)	767141	767141	E16
End-of-cycle light	170051	NA	E16
Magnetic separator	511572	511572	E16
Rubber kick flights	140566	??????	E16
Safety matting (specify length)	509002	509002	E16
Vibrating reclaimer screen assembly	140335	140419	E16
Vibrating shed sheet	140572	140572	E16
Dust Collector Options for DCM-200 (600 CFM)			
Bag shaker, automatic electrical, 115 volts	140340	140390	E17
Bag shaker, automatic pneumatic	140683	140684	E17
HEPA filter	140215	140215	E17
HEPA filter, pressure differential gauge assembly	140221	140221	E17
Leg-extension kit	140180	140180	E17
Lid assembly for 55-gallon drum	140255	140255	E17
Manometer	140344	140398	E17
Sound attenuator/damper	140361	140361	E17

continued on next page



Options: BB4-3K Basket Blaster

BB4-3K Basket Blasters—continued

	FACTORY INSTALLED	CUSTOMER INSTALLED	SEE PAGE
Dust Collector Options for CDC-6 (600 CFM)			
HEPA filter	140215	140215	E18
HEPA filter, pressure differential gauge assembly	140221	140221	E18
Photohelic cartridge cleaning, automatic pulse	140900	140900	E18
Leg-extension kit	140185	140185	E18
Lid assembly for 55-gallon drum	140155	140155	E18
Sound attenuator/damper	140361	140361	E18
Dust Collector Options for DCM-200A (900 CFM)			
Bag shaker, automatic electric, 115 volts	140340	140390	E17
Bag shaker, automatic pneumatic	140683	140684	E17
HEPA filter	140215	140215	E17
HEPA filter, pressure differential gauge assembly	140221	140221	E17
Leg extension kit	140180	140180	E17
Lid assembly for 55 gallon drum	140255	140255	E17
Manometer	140344	140398	E17
Sound attenuator/damper	140769	140769	E17
Dust Collector Options for CDC-9 (900 CFM)			
HEPA filter	140215	140215	E18
HEPA filter, pressure differential gauge assembly	140221	140221	E18
Photohelic cartridge cleaning, automatic pulse	140900	140900	E18
Leg extension kit	140185	140185	E18
Lid assembly for 55 gallon drum	140155	140155	E18
Sound attenuator/damper	140769	140769	E18
Higher Volume Ventilation Options			
1200 CFM equipment	Call factory	Call factory	



Parts: BB2 & BB4-3K Electrical Options

Standard Wiring – BB2-3K and BB4-3K basket blasters are wired for a 230 volt, 60 hertz, three-phase electrical source.

IMPORTANT! Systems must be wired at the factory to match the customer's electrical supply. If the electrical supply at the installation site differs from 230V/60Hz/3Phase, specify the appropriate part number(s) shown below. Customer installed electrical options are not available with BB2-3K and BB4-3K basket blasters.

Part Numbers for Three-Phase Options

NOMINAL VOLTAGE/FREQUENCY	208V/60Hz	460V/60Hz	575V/60Hz	380V/50Hz*
	PART NUMBERS			
400 CFM/1 horsepower (BB2-3K only), single source, factory installed	140071	140074	140075	140073
600 CFM/1½ horsepower , single source, factory installed	140051	140054	140055	140053
900 CFM/2 horsepower , single source, factory installed	140091	140094	140095	140093

* 50 hertz systems with reclaimers may not convey heavier media, especially when using multiple guns, large nozzles and at high altitudes. Consult factory.

Part Numbers for Single-Phase Options

BB2-3K, 400 CFM/1 horsepower connection to 230V/60Hz/1Ph (3 wire) supply requires:	Part Number 141072
BB2-3K, 600 CFM/1½ horsepower connection to 230V/60Hz/1Ph (3 wire) supply requires:	Part Number 141052
BB4-3K, 600 CFM/1½ horsepower connection to 230V/60Hz/1Ph (3 wire) supply requires:	Part Number 141052

NOTES on Electrical Components

- If no electrical disconnect is provided, the customer is responsible for providing appropriate disconnecting means adjacent to this equipment for each incoming power circuit. Each disconnect shall be of a type and rating suitable for the application. Refer to current editions of the **National Electrical Code** (NFPA 70) and the **Electrical Standard for Industrial Machinery** (NFPA 79). Systems with a line cord plug do not require a disconnect.
- Interconnections between cabinet, dust collector and customer's utilities are to be supplied by installer.
- Electrical components cannot be returned to the factory for exchange.
- All standard systems are **three-wire** (3 phase conductors and a ground).
- Consult factory for other electrical options, for conformance with customer electrical specifications, or if you have questions.

See Operating Instructions for Proper Electrical Connections

Electrical connections at installation should be performed by a competent licensed electrician following local codes, standard safety procedures and proper installation instructions.

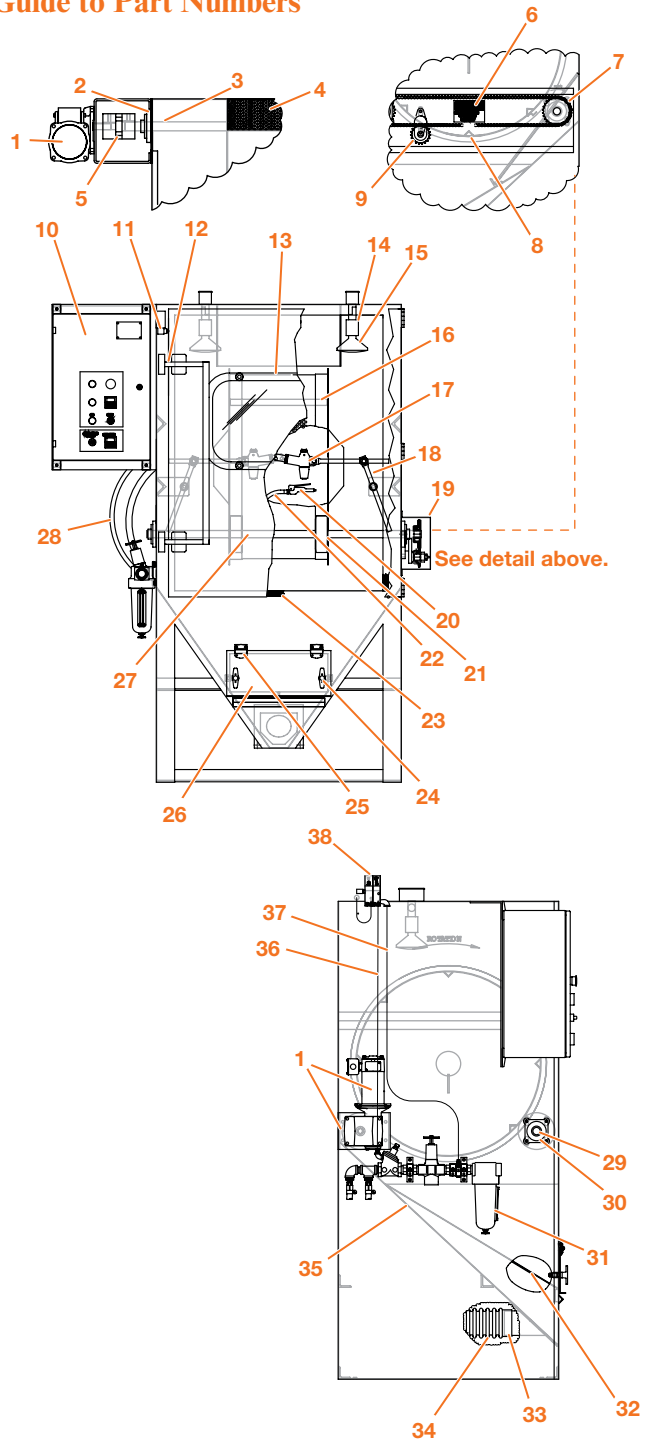
Never use silica sand in any Empire equipment.



Parts: BB2-3K Cabinet Assembly

BB2-3K Cabinet Components		
Item	Description	Part #
1	Motor, 1/3 horsepower Reducer, 210/60/1	777095 Call
2	Flange bearing (4 required) Felt washer (4 required)	570101 510081
3	Back shaft, drive	777117
4	Filter (2 required)	510521
5	Coupling, 7/8" bore Coupling, 1 3/16" bore Coupling, spider	570743 570745 570746
6	Label	564844
7	Sprocket (2 required)	570721
8	Chain, 6' (specify length)	570771
9	Idler sprocket Fixed tensioner Shaft tightener	570611 570621 570603
10	Electrical assembly (See page E10.)	140051
11	Limit switch Door handle	534333 777119
12	Latch, draw breaker (2 required) Shim plate Door keeper	509371 509381 751242
13	Window kit (includes items listed below)	140544
*	Gasket, window, 6' section	524451
†Δ	Gasket, 1/4" x 1/4" (specify length)	525941
	Safety glass, 14" x 22"	510401
	Knob, 3/8" - 16 (4 required)	510461
	Frame, window	760291
	Spacer, window (4 required)	525931
	Bolt, 3/8" - 16 x 1 1/4" (4 required)	551852
14 †	Gasket, light bulb	580191
15 *	Fixture, incandescent Lamp, incandescent	532711 532701
16	Basket, 5/16" perforations	767131
17	Gun assembly, MH-2 (See page E15.)	505571
	Fixed gun holder	140400
18	Extension arm Mounting bracket Knuckle assembly	510731 509541 560231
19	Chain, guard	777115
20	Gun, dust off	509821
21	Wheel	777097
22	Air hose assembly	522631
23	Door gasket, 15' (specify length)	523651
24	Compression latch, 180° turn Latch seal	509005 777129
25	Hinge	555006
26	Parts door Gasket, 1/16" x 1" x 4' (specify length)	777125 524471
27	Front shaft	777116
28	Blast hose, 5/8" x 36' (specify length)	520802
29	Felt washer (4 required)	510081
30	Flange bearing (4 required)	570101
31	Pipe-string assembly, 1" (See page E14.)	140066
32	Screen, removable, 5/16" perforated steel	777127
33	Hose adapter Gasket, hose adapter	760421 524381
34	Conveying hose, heavy duty, 4" x 9'	140354
35	Blast plate (order with Red Sheet) Red sheet (order with Blast Plate)	777131 580203
36	Air-hose assembly, 1/4" x 42"	140855
37	Air-hose assembly, 1/4" x 49"	140857

Guide to Part Numbers



Item	Description	Part #
38	Versa valve assembly	340200-1
	Versa valve assembly used with blow off	340200-2

* Essential component to prevent downtime

† Recommended spare part—Consumable wear item

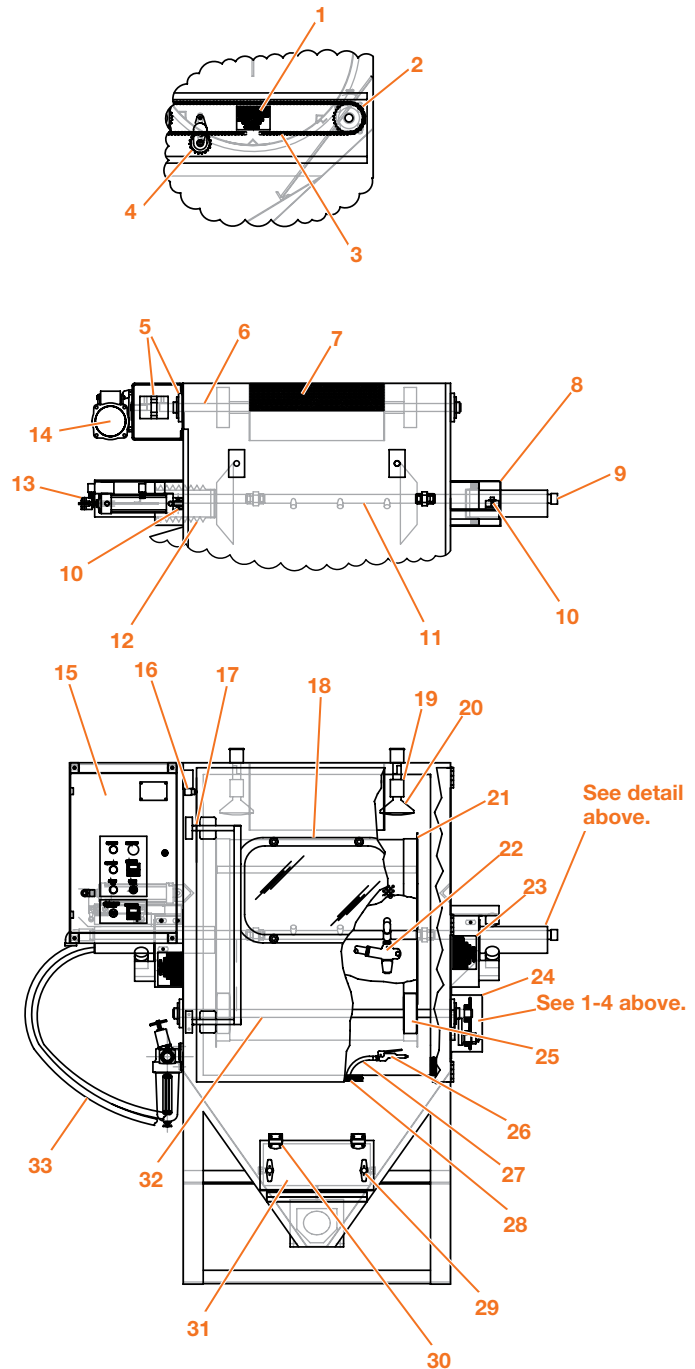
Δ Failure to replace glass with Empire safety glass could result in serious injury.



Parts: BB4-3K Cabinet Assembly

BB4-3K Cabinet Components			
Item	Description	Part #	
1	Label	564844	
2	Sprocket (2 required)	570721	
3	Chain, 6' (specify length)	570771	
4	Idler sprocket	570611	
	Fixed tensioner	570621	
	Shaft tightener	570603	
5	Coupling, 7/8" bore	570743	
	Coupling, 1 3/16" bore	570745	
	Coupling, spider	570746	
6	Back shaft, drive	777117	
7	Filter (2 required)	510521	
8	Right guard sleeve	777112	
9	Pipe cap	544112	
10	Rollers (5 required)	777093	
11	Mixing head	766801	
12	Bellows, 4" (2 required)	555002	
	Hose clamp, 4" (2 required)	520531	
	Bellows clamp plate	777122	
13	Left guard sleeve	777113	
14	Motor, 1/3 horsepower	777095	
	Reducer	570988	
15	Electrical panel (See page E10.)	140050	
16	Limit switch	534333	
	Door handle	777119	
17	Latch, draw breaker (2 required)	509371	
	Shim plate	509381	
	Door keeper	751242	
	Window kit (includes items listed below)	140544	
	Gasket, window, 6' section	524451	
	Gasket, 1/4" x 1/4" (specify length)	525941	
18	Safety glass, 14" x 22"	510401	
	Knob, 3/8" - 16 (4 required)	510461	
	Frame, window	760291	
	Spacer, window (4 required)	525931	
	Bolt, 3/8" - 16 x 1 1/4" (4 required)	551852	
	19	Gasket, light bulb	580191
	20	Fixture, incandescent	532711
Lamp, incandescent		532701	
21	Basket, 5/16" perforations	510651	
22	Gun assembly, MH-2 (See page E15.)	505571	
23	Label	564844	
24	Chain guard	777115	
25	Wheel (4 required)	777097	
26	Gun, dust off	509821	
27	Air hose assembly	522631	
28	Door gasket, 15' (specify length)	523651	
29	Compression latch, 180° turn	509005	
	Latch seal	777129	
30	Hinge	555006	
31	Parts door	777125	
	Gasket, 1/16" x 1" x 4' (specify length)	524471	
32	Front shaft, driver	777116	
33	Blast hose, 5/8" x 36' (specify length)	520802	

Guide to Part Numbers



* Essential component to prevent downtime
 † Recommended spare part—Consumable wear item
 Δ Failure to replace glass with Empire safety glass could result in serious injury.

continued on next page



Parts: BB4-3K Cabinet Assembly

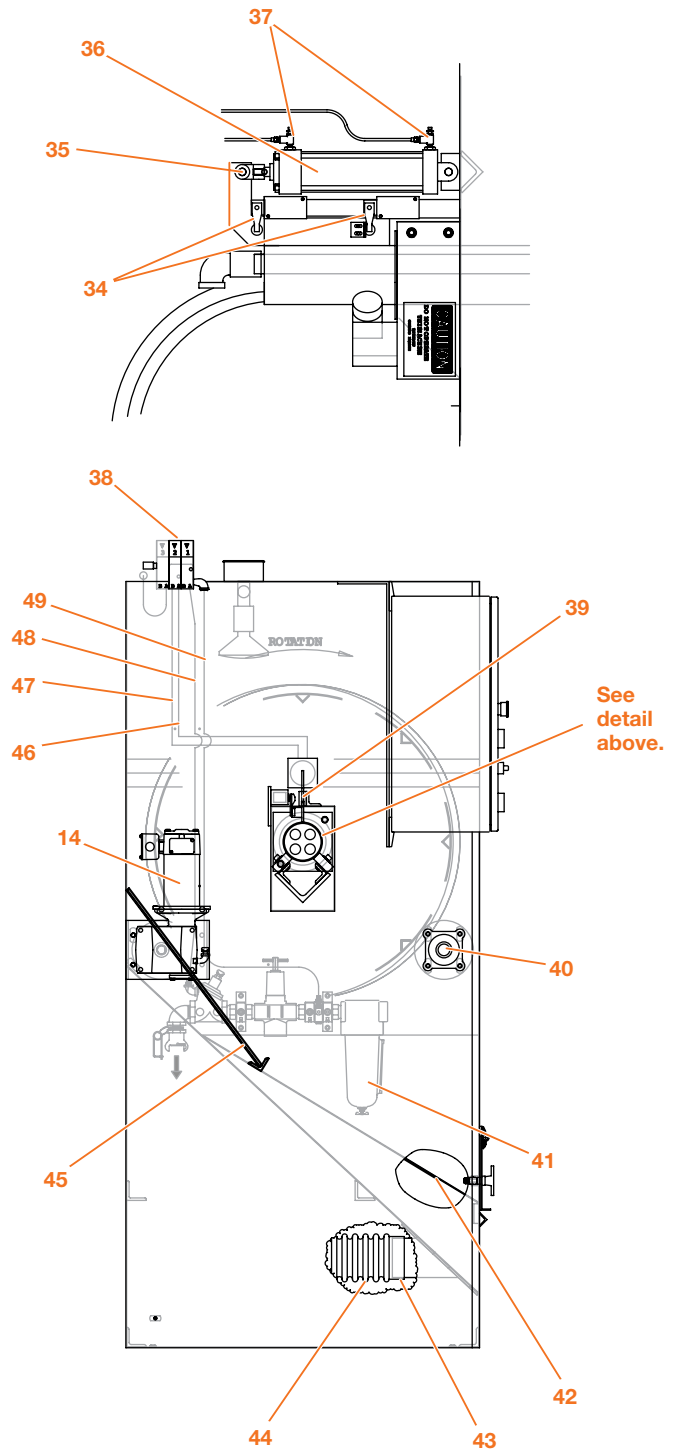
BB4-3K Cabinet Components		
Item	Description	Part #
34	Limit switch (2 required)	534323
	Limit switch tripper	768813
	Operating lever	534743
35	Clevis rod	555011
	Clevis pin (2 required)	555012
36	Air cylinder	555010
37	Valve, flow control (2 required)	518571
	Versa valve assembly	340200-2
38	Versa valve assembly used with blow off	340200-3
	Versa valve body	340103-2
	Muffler	506455
39	UHMW guide	777114
40	Flange bearing (4 required)	570101
	Felt washer (4 required)	510081
41	Pipe-string assembly, 1" (See page E14.)	140067
42	Screen, removable, 5/16" perforated steel	777127
43	Hose adapter	760421
	Gasket, hose adapter	524381
44	Conveying hose, heavy duty	140354
45	Blast plate (order with Red Sheet)	777121
	Red sheet (order with Blast Plate)	580203
46	Air-hose assembly, 1/4" x 30"	522671
47	Air-hose assembly, 1/4" x 27"	140867
48	Air-hose assembly, 1/4" x 49"	140857
49	Air-hose assembly, 1/4" x 42"	140855
	Connector assembly (not shown)	520222

* Essential component to prevent downtime

† Recommended spare part—Consumable wear item

Δ Failure to replace glass with Empire safety glass could result in serious injury.

Guide to Part Numbers

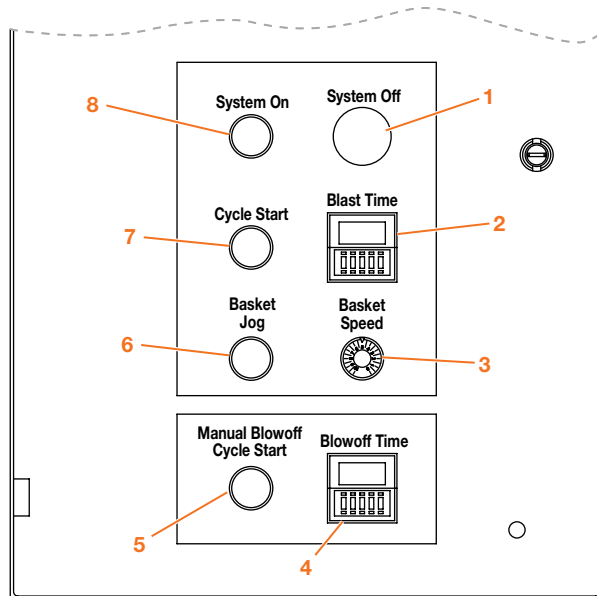




Parts: BB2 & BB4-3K Electrical Panel

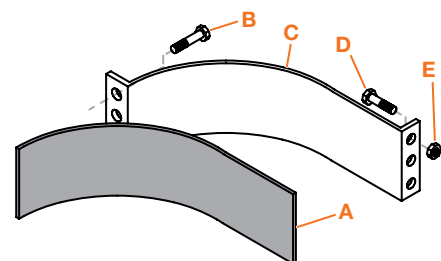
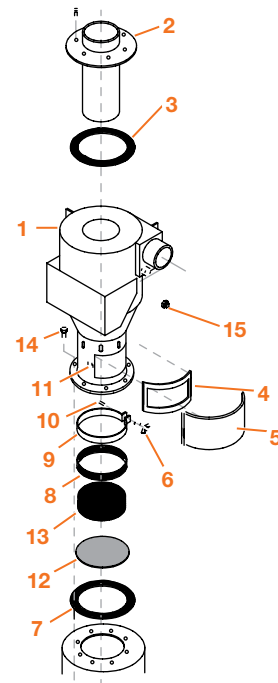
Guide to Part Numbers

BB2 & BB4 ELECTRICAL PANEL COMPONENTS		
Item	Description	PART NUMBER
1	Push button, red	535910F
2	Timer, blast	534034
3	Operator potentiometer	534951F
	Motor controller (not shown)	535003
	Automatic blow off, optional (items 4 & 5)	
4	Timer	534034
5	Push button, black	535920F
6	Push button, grey	535903F
7	Push button, black	535920F
	Contact block	534961F
8	Push button, green	535905F



Parts: BB2 & BB4-3K Reclaimers

BB2 & BB4 RECLAIMER COMPONENTS		600 CFM	900 CFM
Item	Description	PART NUMBER	PART NUMBER
1	Reclaimer body assembly (includes items 1 through 11) Urethane lining (not shown) Standard with system	140440 525861	140441 525891
2 *	Removable top	766741	766751
3 †	Gasket, reclaimer to storage hopper and outlet flange	524371	524371
4 †	Gasket, reclaimer door	524331	524331
5	Door, reclaimer	760721	760721
6	Wing nut, 1/4" - 20	552392	552392
7 †	Gasket, reclaimer to storage hopper	524371	524371
8 †	Gasket, tuning band, solid	524342	524342
	Gasket, tuning band, with slots	524341	524341
9	Tuning band (steel part only), solid	767581	767581
	Tuning band (steel part only), with slots	760701	760701
10	Bolt, 1/4" - 20 x 2"	551782	551782
11	Latch & keeper (requires welding)	509581	509581
12	Screen, flat, 5/16", 13" OD	760711	760711
13	Screen, fine 11 1/2" OD, 8 mesh	739041	739041
14	Bolt, 3/8" - 16 x 1" (8 required)	551852	551852
15	Plug, 1" NPT	522611	522611
	Inlet wear plate (detail)		
	FACTORY INSTALLED	514481	514491
	CUSTOMER INSTALLED	514511	514521
A	Rubber band	524881	524891
B	Bolt, 3/8" - 16 x 2" (3 required)	553892	553892
C	Metal band	761611	761621
D	Bolt, 3/8" - 16 x 1 1/2" (3 required)	551262	551262
E	Nut, 3/8" - 16	552542	552542



* Recommended spare part—Consumable wear item
 † Essential component to prevent downtime

Reclaimer Options

Ultrawear lining extends reclaimer life by a factor of ten.	Part Number
600 CFM reclaimers	526183
900 CFM reclaimers	526193



Parts: BB2 & BB4-3K Dust Collectors, Bag House

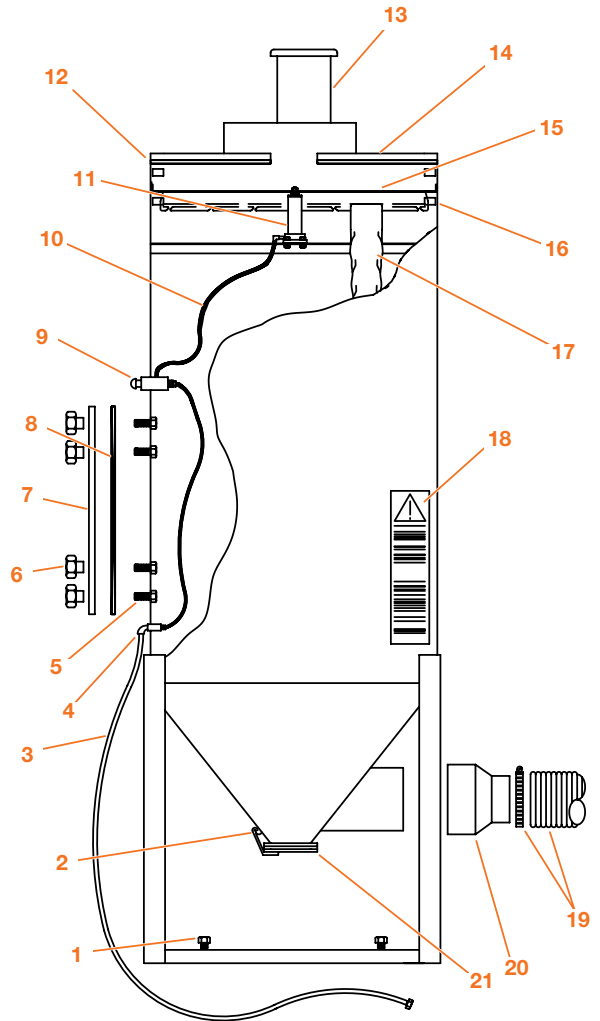
Guide to Part Numbers

For DCM-80A (PN 112000), DCM-200 (PN 113000) & DCM-200A (PN 113001)

DCM SERIES COMPONENTS		
Item	Description	PART#
1	Bolt, levelling, 3/8" - 16 x 2" (4 required)	553892
2	Latch and keeper (requires welding)	509581
3	Hose with fittings, 1/4" x 16', dust collector	523161
4	Adapter, 1/4" tube x 1/4" MPT (inlet)	521081
5	Bolt, 3/8" - 16 x 1 1/4" (6 required)	551852
6	Knob, 3/8" - 16 (6 required)	510461
7	Access door, dust collector	760851
8 †	Gasket, access door, 5/8" x 5/8", 103" section	525711
	Gasket, 5/8" x 5/8" (specify length)	525061
†	Valve, push-button, 1/8" NPT & #10 - 32, "3P"	517221
9	Barbed fitting, 1/4" tube x #10 - 32, 2 per assembly	521101
	Adapter, 1/4" tube x 1/8" MPT, 90° (for air cylinder)	520432
10	Tubing, 1/4" OD (8' required)	510541
11 †	Air cylinder, standard collector and auto shaker	515981
	Air cylinder, auto-pneumatic bag shaker only	515771
12 †	Gasket, top plate, 1/8" x 1/4" (8' for DCM-80A; 12' for others)	523551
13	Blower & blower motors (See page E13.)	—
	Top plate, DCM-80A	760841
14	Top plate, DCM-200, DCM-200A	760901
	Top plate, DCM-200B	760187
15	Bag-rack weldment (DCM-80A)	760861
	Bag-rack weldment (DCM-200A)	760921
16	Rubber bumper (8 required)	523541
17 *	Dust bag, cotton sateen (12 required for DCM-80A), (30 required for DCM-200 & DCM-200A)	515521
	Decal, Empire logo	564305
	Decal, orange dot strip	564301
	Paint, 6 oz. aerosol, beige	564476
18	Decal, Instruction/Warning	567405
19	Ducting & adapters (See page E15.)	—
20	Adapter, 10 1/8" ID x x 6" OD, DCM-200	761801
21 †	Gasket, clean-out door, dust collector	524351

* Recommended spare part—Consumable wear item

† Essential component to prevent downtime



Bag-House Dust Collector Options

	PART NUMBERS		
	FACTORY INSTALLED	CUSTOMER INSTALLED	SEE PAGE
Automatic bag shaker cleans bags thoroughly every time the system is turned off.			
Electric shaker for all bag-house collectors	140340	140390	E17
Pneumatic shaker for DCM-80A	140685	140686	Call
Pneumatic shaker for DCM-200 & DCM-200A	140683	140684	Call
HEPA filter captures very fine particles.	140215	140215	—
HEPA filter, pressure differential gauge assembly informs operator regarding filter cleanliness.	140221	140221	—
Leg extension kit raises collector so larger collection drum can be placed underneath.			
Kit for DCM-80A	140170	140170	—
Kit for DCM-200 & DCM-200A	140180	140180	—
Lid assembly for 55 gallon drum attaches securely to clean-out door.	140155	140155	E17
Manometer keeps operator informed regarding bag cleanliness.	140344	140398	—
Sound attenuator/damper reduces noise in the work place.			
Attenuator/damper for DCM-80A & DCM-200	140361	140361	—
Attenuator/damper for DCM-200A	140769	140769	—
SuperSmooth dust bags handle severe dust loading.	516181	516181	—



Parts: BB2 & BB4-3K Dust Collectors, Cartridge

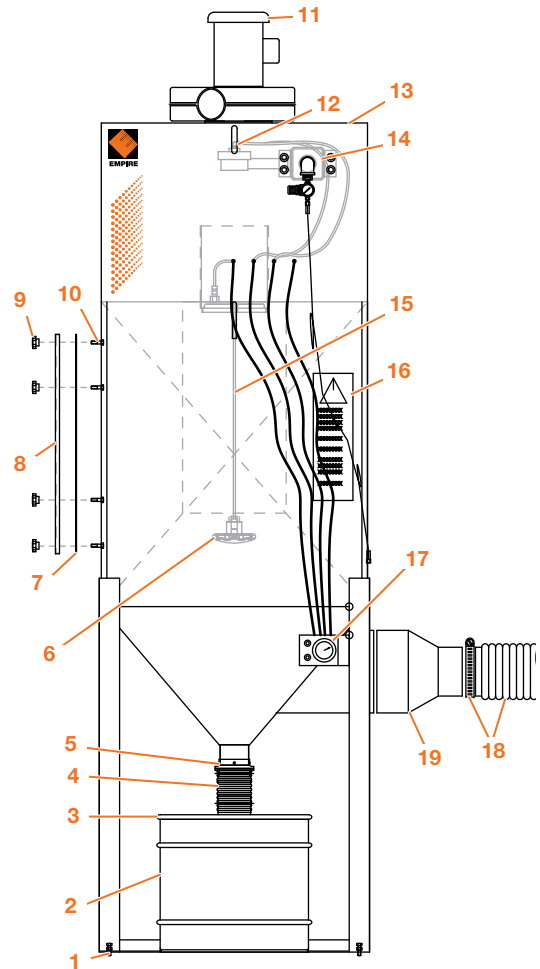
Guide to Part Numbers

For CDC-6 (PN 113007) & CDC-9 (PN 113011)

"CDC" SERIES COMPONENTS		
Item	Description	PART#
1	Bolt, leveling, 3/8" - 16 x 2" (4 required)	553892
2	16 gallon drum	504016
3	Lid for 16 gallon drum	850099-1
4	Gasket, dust drum lid, 5" (not shown)	800166
5	Dust hose, 4" (specify length)	522923
6	Hose clamp, 4" (2 required)	520531
7	16 gallon drum assembly (includes items 2 through 5)	113015
8	Filter clamping screw	515526
9 †	Gasket, access door, 5/8" x 5/8", 103" section	525711
10	Gasket, 5/8" x 5/8" (specify length)	525061
11	Access door, dust collector	760851
12	Knob, 3/8" - 16 (6 required)	510461
13	Bolt, 3/8" - 16 x 1 1/4" (6 required)	551852
14	Empire logo	564305
15	Blower and blower motors (<i>See page E13.</i>)	—
16	Diaphragm valve (2 required)	516350
17	Top plate, CDC-6	760901
18	Top plate, CDC-9	760901
19	Top plate, CDC-12	760187
20	Air supply assembly	140851
21 *	Cartridge filter (2 required)	515525
22	Decal, Instruction/Warning	567405
23	Mini-Helic package	550450
24	Ducting and adapters (<i>See page E15.</i>)	—
25	Adapter, 10" ID x 6" OD for CDC-6	761801

* Recommended spare part—Consumable wear item

† Essential component to prevent downtime



Cartridge Dust Collector Options

	PART NUMBERS		
	FACTORY INSTALLED	CUSTOMER INSTALLED	SEE PAGE
HEPA filter captures very fine particles.	140215	140215	—
HEPA filter, pressure differential gauge assembly informs operator regarding filter cleanliness.	140221	140221	—
Leg extension kit raises collector so larger collection drum can be placed underneath.	140185	140185	—
Lid assembly for 55 gallon drum attaches securely to clean-out door.	140155	140155	E17
Photohelic cartridge cleaning improves system performance, saves operator time.	140900	140900	E18
Sound attenuator/damper reduces noise in the work place.			
Attenuator/damper for CDC-6	140361	140361	—
Attenuator/damper for CDC-9	140769	140769	—



Parts: BB2 & BB4-3K Blowers (Fans & Motors)

Blower Assembly Part Numbers

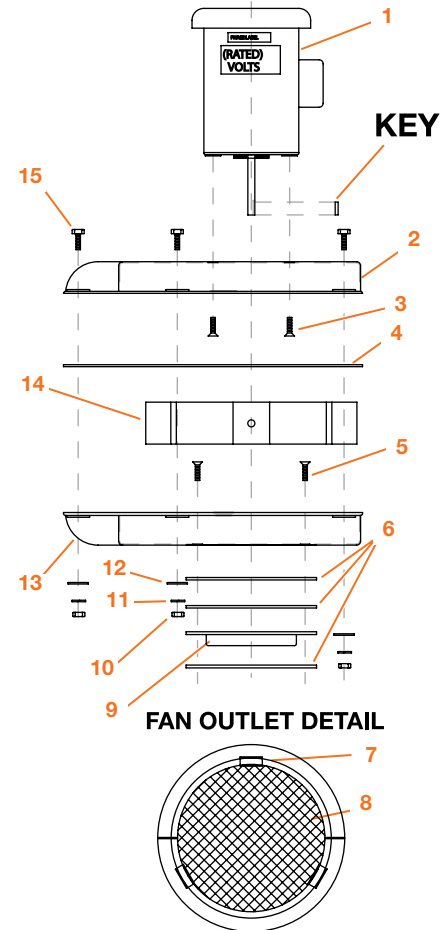
For Dust Collector Models	Horsepower	Part Number	Standard Electrical	CFM at 6" SP	Notes
DCM-80A	1	140326	115/60/1	400	Bag not included
DCM-200 & CDC-6	1½	140237	230/60/3	600	6" SP at 600 CFM
DCM-200A & CDC-9	2	140238	230/60/3	900	6" SP at 900 CFM

Note: Motor starters, contactors, interconnecting wiring and ducting not included.

Guide to Part Numbers

BLOWER COMPONENTS		PART NUMBERS		
Item	Description	1 HP	1½ HP	2 HP
1 †	Motor, 115-230V, 60 Hz, Single phase	549531	549681	549691
	Motor, 220-480V, 60 Hz, 3 phase	549701	549721	549711
	Motor, 550-600V, 60 Hz, 3 phase	549731	549741	549751
	Motor, 110-220V, 50 Hz, Single phase	549761	549771	549781
Note: Motor part numbers shown in BOLD are supplied as standard most often.				
2	Housing, fan, top	753511	753511	753515
3	Screw, flat head ⅜"-16 x 1"	553271	553271	553271
4	Gasket, fan housing, ⅛" x ¼" (5' section)	523251	523251	523251
5	Screw, flat head ⅜"-16 x 2¼" (dust collector)	553183	553183	553183
6	Gasket, mounting (3 required)	524361	524361	524361
7	Clip, fan guard (4 required)	554431	554431	554431
8	Guard, fan outlet	739011	739011	739025
9	Outlet flange	751501	751501	—
10	Hex nut, ¼"-20	552522	552522	552522
11	Lock washer, ¼"	552752	552752	552752
12	Flat washer, ¼"	552882	552882	552882
13	Housing, fan, bottom	753521	753521	753525
14 †	Impeller (fan blade), 10⅝" dia., ⅝" ID	753021	—	—
	Impeller (fan blade), 11½" dia., ⅝" ID	—	753661	—
	Impeller (fan blade), 12½" dia., ⅝" ID	—	—	753031
15	Bolt, ¼"-20 x 1"	552131	552131	552131

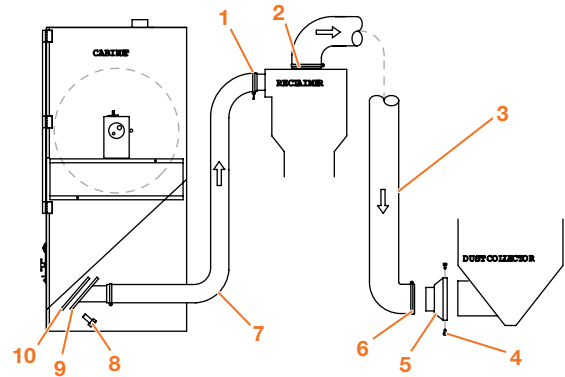
† Essential component to prevent downtime



Parts: BB2 & BB4-3K Ducting/Hoses

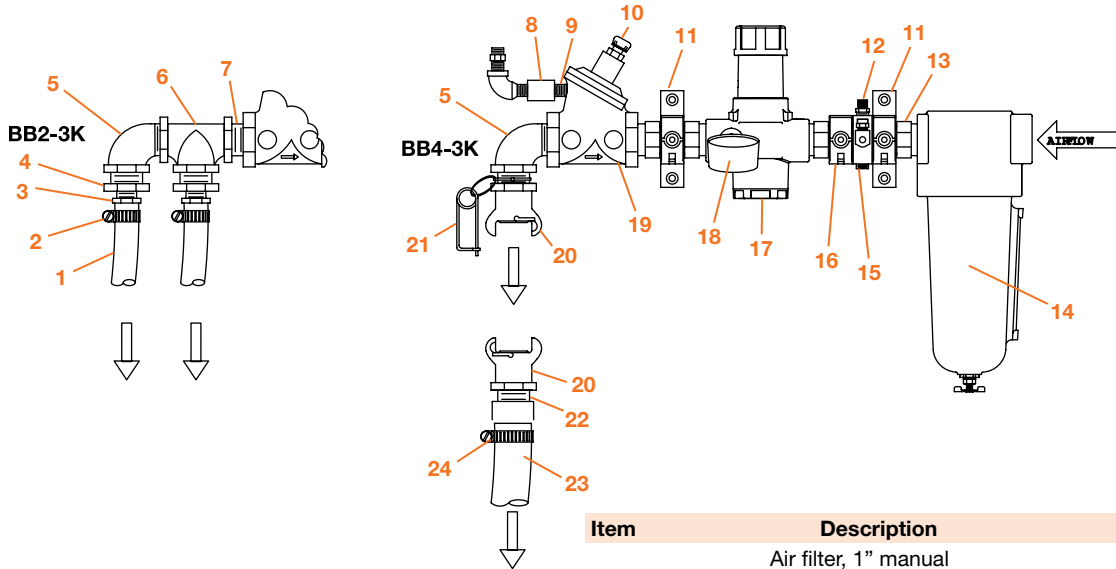
Guide to Part Numbers

Item	BB2-3K & BB4-3K Ducting/Hoses Description	PART NUMBER
1	Hose clamp, heavy-duty conveying hose (2 required)	522953
2	Hose clamp, dust hose (2 required)	520551
3	Dust hose, 6" x 11'	516101
4	Screw, 1/4" x 20, self drill (4 required)	551560
5	Adapter, 6" O.D. x 10" I.D., DCM-200 & CDC-6	761801
6	Hose clamp, dust hose (2 required)	520551
7	Heavy-duty conveying hose (12' required)	515911
8	Bolt, 1/4"- 20 x 1" (4 required)	551212
9	Outlet adapter, cabinet	760421
10	Gasket, cabinet outlet	524381



Parts: BB2 & BB4-3K Pipe String

Guide to Part Numbers



BB2-3K & BB4-3K Pipe String		
Item	Description	PART#
1	Air hose, 1/2" (Specify length.)	520861
2	Hose clamp, 1/2"	520502
3	Hose barb, 1/2" NPT	530062
4	Pipe bushing, 1" x 1/2"	544492
5	Elbow, 1" NPT street	543542
6	Tee, 1"	545532
7	Close nipple	546202
8	Pipe coupling, 1/8"	544832
9	Pipe nipple, 1/8"	545902
10	Vent	523261
11	Quick clamp with feet	522155
12	Hose adapter, 1/4" x 1/4"	520222
13	Adapter	522156

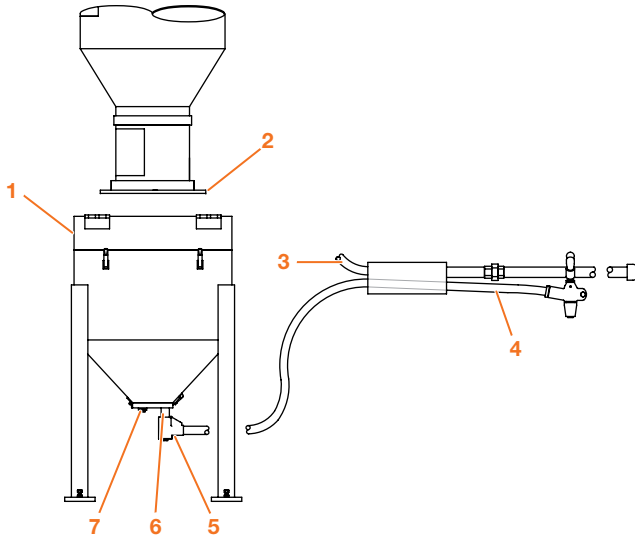
Item	Description	PART#
	Air filter, 1" manual	517271
14 †	Element for air filter, 5µ	508002
†	O-ring and gasket kit for Norgren air filter	505161
15	Porting block	522157
16	Quick clamp	522154
	Air pressure regulator	517251
17 †	Diaphragm and O-ring for regulator	508161
18	Gauge, 1/4" NPT	550232
	Main valve, 1" Aquamatic	517042
19 †	Diaphragm and seal kit for 1" Aquamatic	517583
	Special wrench for 1" Aquamatic	518512
	Repair kit for 1" Aquamatic includes 517582 kit	517583
20	Tank coupling, 1"	505782
21	Safety pin	510511
22	Hose barb	520181
23	Air hose, 1" (Specify length.)	520912
24	Hose clamp, 1"	520501

† Essential component to prevent downtime



Parts: BB2 & BB4-3K Hopper Assembly

Guide to Part Numbers



Item	Description	PART#
1	Hopper, multi-gun	140487
2 †	Gasket, reclaimer to hopper	524381
3	Air hose, 1/2" ID (Specify length.)	520861
4	Blast hose, 5/8" ID (Specify length.)	520802
5	SAR-2 media regulator, complete, 1 1/4" FPT	290156
	SAR-2 media regulator, body	753351
6	Nipple, 1 1/4" NPT x 5"	546742
7	Plug, 1 1/4" NPT	544142

* Recommended spare part—Consumable wear item
 † Essential component to prevent downtime

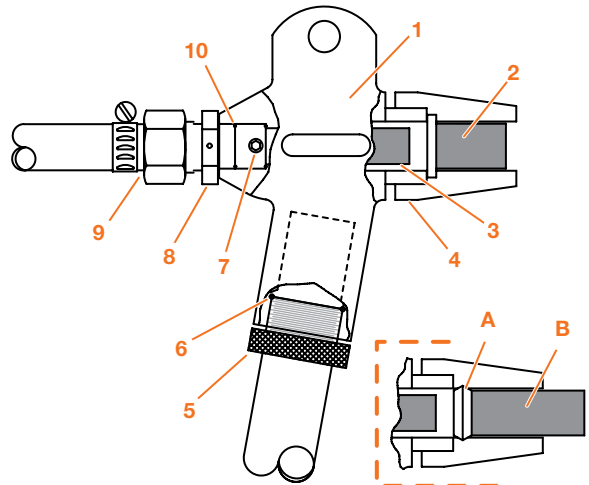


Parts: BB2 & BB4-3K Blast Guns

MH-2 Guns

Item	Description	PART NUMBER
1 *	Gun body, MH-2 short handle	753561
2 *	Nozzle, Di-Carb™ 5/16" (standard)	501341
3 *	Air jet, 5/32" (green)	505671
4 *	Nozzle adapter, plastic	505641
5	Nut, hose clamp, MH-2	520081
6	O-ring 1 1/16" ID x 1 5/16" OD	523881
7	Screw set, 1/4" – 20 x 3/8"	551052
8	Connector, MH-2	505631
9	Hose barb, 1/2" FPT x 1/2" hose	520402
10	O-ring, 1/2" ID x 5/8" OD (2 required)	523912

* Recommended spare part—Consumable wear item
 † Essential component to prevent downtime



Optional for Wide-Spray Setup

Item	Description	PART NUMBER
A *	Compression ring	752453
B *	Di-Carb™ nozzle, 3/8" wide spray	503573
	Boron nozzle, 3/8" wide spray	503563

* Recommended spare part—Consumable wear item

MH-2 Suction Gun Assemblies

Nozzle (Air Jet) Diameters	PART NUMBERS		
	Short-Handle Gun with		
	1/4" (1/8")	5/16" (5/32")	7/16" (7/32")
Ceramic nozzle	505531	505541	505551
Di-Carb™ nozzle	505561	505571	505581
Boron nozzle	505591	505601	505611

• Short-handle gun with 5/16" ceramic nozzle supplied as standard.

Nozzles for MH-2 Guns

Diameter (#)	PART NUMBERS		
	1/4" (#4)	5/16" (#5)	7/16" (#7)
Ceramic (each)	502421	502431	502441
Ceramic (10 pack)	503341	503351	503361
Di-Carb™ (each)	501331	501341	501351
Boron (each)	502071	502081	502091

Air Jets for MH-2 Guns

Diameter	Designation	Note	PART NUMBER
3/32"	orange		505651
1/8"	yellow		505661
5/32"	green	Standard	505671
3/16"	blue		505681
7/32"	white		505691
1/4"	red		505701



Options Details: BB2 & BB4-3K Cabinets

Cabinet Options

PART NUMBERS
FACTORY INSTALLED CUSTOMER INSTALLED

Automatic blow off cycle removes dust and fines at the end of each blast cycle. BB2-3K BB4-3K	140044 140034	NA NA
Basket end covers retain fly-away parts.	140496	140496
Basket with 1/8" perforations handles smaller parts. (Deduct PN 510651 if factory installed.) BB2-3K BB4-3K	767151 767141	767151 767141
Basket with PVC coating improves durability. (Deduct PN 510651 if factory installed.) BB2-3K BB4-3K	509281 509171	509281 509171
End-of-cycle light indicates completion of blast cycle. (Must be purchased with automatic blow off .)	170051	NA
Magnetic separator removes ferrous debris during media recycling.	511572	511572
Rubber kick flights improve tumbling action, promote more even processing of parts.	140566	NA
Rubber curtains shield cabinet interior from harsh abrasives, prolong equipment life. • Attaching these neoprene curtains requires 1/4"-20 studs, brass grommets and rubber nuts (PN 523533).		
Safety matting protects cabinet floors and workers. (Two-foot-wide safety matting, with pockets to catch spilled media, is sold by the linear foot. Fourteen feet required around cabinet. Specify total length required when ordering.)	509002	509002

Vibrating screen assures smooth flow of light and fine media.	140335	140419
--	--------	--------

Vibrating Screen Components

Item	Description	PART #
1	Regulator, relieving	517612
2	Air valve, pilot operated	519011
3	Breather vent	523161
4	Socket-head cap	553601
5	Vibrator	517971
6	Muffler, 1/8" bronze	517281
7	Spacer	536359

Vibrating shed sheet simplifies unloading of parts.	140572	140572
Window protector , made of clear plastic, is recommended for use with light, less aggressive abrasives.	509191	509191
Window protector , consisting of a steel screen, protects against heavy and coarse media.	509201	509201



Options Details: Dust Collectors

Bag House Dust Collector Options

For DCM-80A (PN 112000), DCM-200 (PN 113000) & DCM-200A (PN 113001)

PART NUMBERS
FACTORY INSTALLED **CUSTOMER INSTALLED**

Bag shaker, automatic electric, cleans bags thoroughly every time the system is turned off.

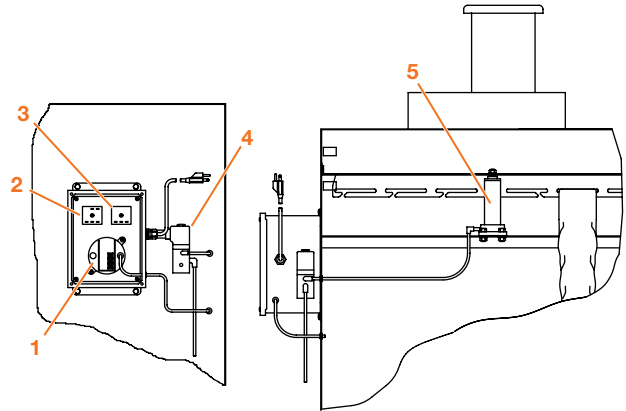
140340

140390

For DCM-80A, DCM-200 & DCM-200A

Bag Shaker, Automatic Electric Components

Item	Description	PART #
1	Pressure switch, differential	550311
2	Timer	531081
3	Flasher	535313
4	Solenoid valve, 120 VAC	517311
5	Cylinder (not included; standard with collector)	515981



Bag shaker, automatic pneumatic for DCM-80A

140685

140686

For part information: **Call factory.**

Bag shaker, automatic pneumatic for DCM-200 & DCM-200A

140683

140684

For part information: **Call factory.**

HEPA filter captures very fine particles.

140215

140215

Replacement filter

516305

516305

HEPA filter, pressure differential gauge assembly informs operator regarding filter cleanliness.

140221

140221

Leg extension kit raises collector so larger collection drum can be placed underneath.

Kit for DCM-80A

140170

140170

Kit for DCM-200 & DCM-200A

140180

140180

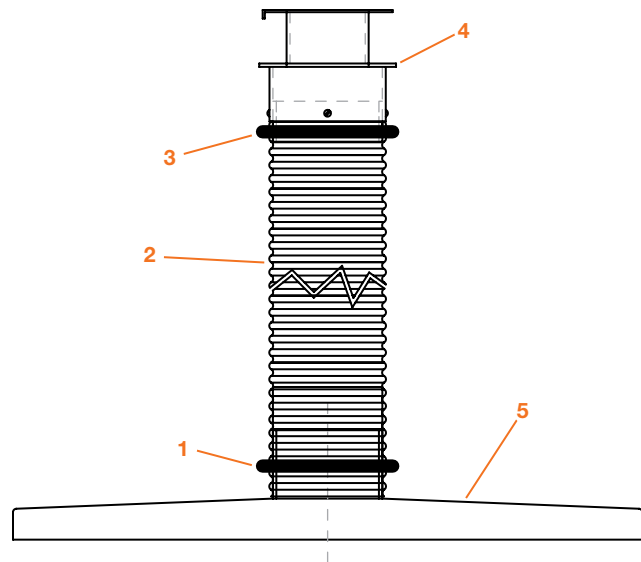
Lid assembly for 55 gallon drum attaches securely to clean-out door.

140255

140255

Lid Assembly Components

Item	Description	PART #
1	Hose clamp, 4"	520531
2	Dust hose, light-duty, 4"	522923
3	Hose clamp, 4"	520531
4	Adapter	760412
5	Lid, 55 gallon drum	761007
	Gasket for lid (not shown)	800166



Manometer keeps operator informed regarding bag cleanliness.

140344

140398

Sound attenuator/exhaust damper reduces noise in the work place.

Attenuator/damper for DCM-80A & DCM-200

140361

140361

Attenuator/damper for DCM-200A

140769

140769



Options Details: Dust Collectors

Cartridge Dust Collector Options

For CDC-6 (PN 113007) & CDC-9 (PN 113011)

	PART NUMBERS	
	FACTORY INSTALLED	CUSTOMER INSTALLED
HEPA filter captures very fine particles.	140215	140215
Filter replacement	516305	516305
HEPA filter, pressure differential gauge assembly informs operator regarding filter cleanliness.	140221	140221
Leg extension kit raises collector so larger collection drum can be placed underneath.	140185	140185
Lid assembly for 55 gallon drum attaches securely to clean-out door. (Page E17.)	140155	140155
Manometer keeps operator informed regarding bag cleanliness.	140344	140398

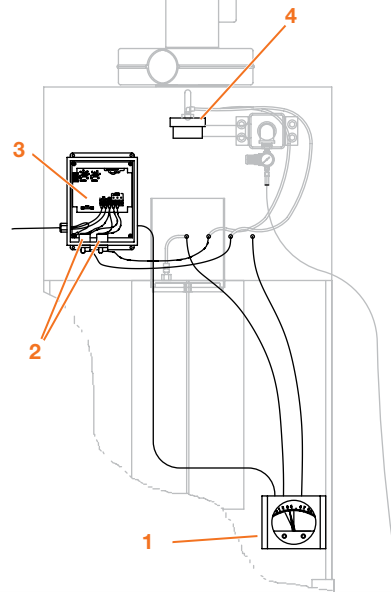
Photohelic cartridge cleaning improves system performance, saves operator time.

140900

140900

Photohelic Cleaning Components

Item	Description	PART #
1	Photohelic gauge	550074
2	Solenoid valve	516335
3	Timer board	585090
4	Diaphragm valve (2 required) (Not included; standard on collector)	516350



Sound attenuator/exhaust damper reduces noise in the work place.

Attenuator/damper for CDC-6

140361

140361

Attenuator/damper for CDC-9

140769

140769





Models: BBO-1 & BBO-2 Basket Blasters

MODEL DESCRIPTION	PART NUMBER	NUMBER OF BLAST GUNS	DUST COLLECTION	BLOWER MOTOR	SHIPPING WEIGHT
BBO	108012	1 standard	—	—	100 lbs
BBO-1	108010	1 standard	Dust Bag	—	100 lbs
BBO-2	108011	1 standard	DC-16	1/3 hp	130 lbs



Options: BBO-1 & BBO-2 Basket Blasters

	FACTORY INSTALLED	CUSTOMER INSTALLED	SEE PAGE
Single-Phase Electrical Options			
Single Source:			
208-240 volt, 50-60 hertz with dust bag	139112	Call factory	Below
208-240 volt, 50-60 hertz with DC-16 collector	139143	Call factory	Below
Cabinet Extended-Wear Options			
Arbonited basket	511541	511541	E20
Nozzle, 1/4" boron (requires PN 504921 adapter)	502101	502101	E22
Nozzle, 1/4" DiCarb	501311	501311	E22
Cabinet Options			
Blow-off gun assembly	140859	140859	E20
Dust Collector Options			
DC-16 for BBO-1 (included with BBO-2)	117216	117216	E21



Parts: BBO-1 & BBO-2 Electrical Options

Standard Wiring – BBO basket blasters are wired for a 115 volt, 60 hertz, single electrical source.

Optional Wiring – A factory installed transformer (**Part Number 139143 with dust collector or Part Number 139112 with dust bag**) is available for 208-240 volt, 50-60 hertz, single phase electrical sources with two or three wires.

IMPORTANT! Systems must be wired at the factory to match the customer's electrical supply.

NOTES on Electrical Components

- No electrical disconnect is provided. The customer is responsible for providing appropriate disconnecting means adjacent to this equipment for each incoming power circuit. Each disconnect shall be of a type and rating suitable for the application. Refer to current editions of the **National Electrical Code (NFPA 70)** and the **Electrical Standard for Industrial Machinery (NFPA 79)**. Systems with a line cord plug do not require a disconnect.
- Electrical components cannot be returned to the factory for exchange.

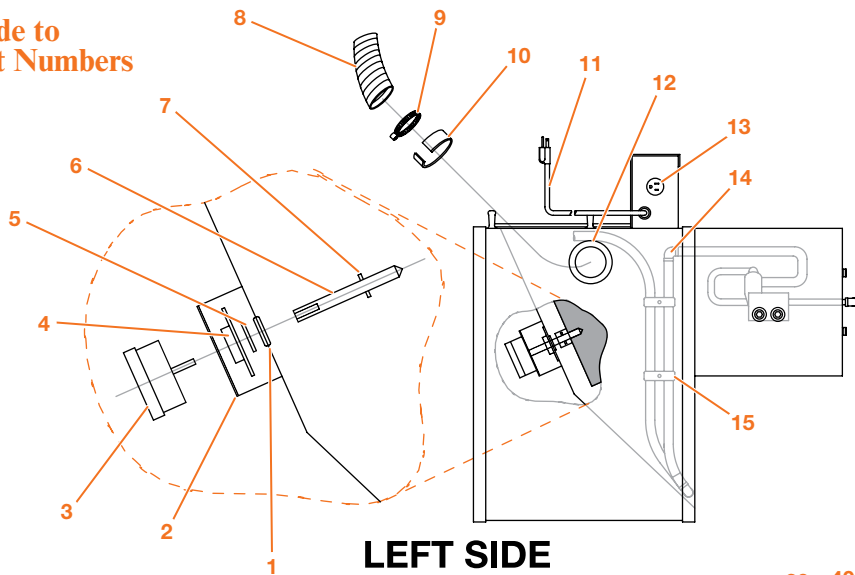
See Operating Instructions for Proper Electrical Connections

Electrical connections at installation should be performed by a competent licensed electrician following local codes, standard safety procedures and proper installation instructions.

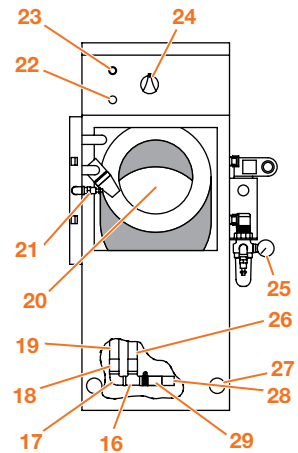


Parts: BBO-1 & BBO-2 Cabinet Assembly

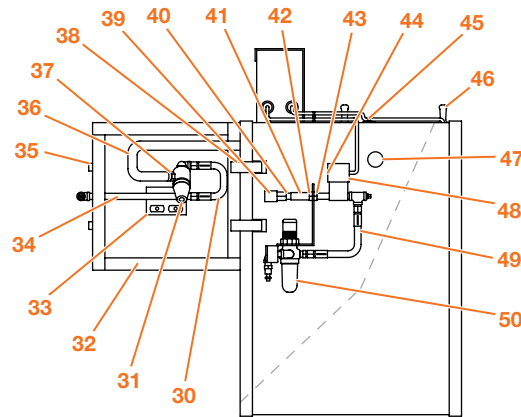
Guide to Part Numbers



LEFT SIDE



FRONT



RIGHT SIDE

Item	BBO-1 & 2 Cabinet Assembly Description	PART NUMBER
1 *	Shaft grommet	524431
2	Motor bracket	768131
3 *	Motor, .01 HP, 115V/60Hz/1Ph	549581
4 *	Shaft bearing (pillow block)	570161
5	Shaft washer, felt	516091
6	Shaft	768191
7 *	Roll pin, 1/8" x 1"	553282
8 *	Dust hose, light duty, 3" x 6'	515941
9	Adjustable clamp, 3"	520521
10	Gasket, 1/4" x 1 1/2" (12" length required)	525181
11	Line cord, 120V, with plug	529601
12	Adapter ring	768221
13	Receptacle, 120V	534101
14 †	Elbow, 90°	543712
15	Double tube clip	523101
16 †	Tee, 1/4"	545502
17	Elbow street, 90°	543512
18	Nipple, 1/4" x 4" TOE (2 required)	546501
19 *	Air hose, 1/2" x 18"	523091
20 †	Basket assembly, uncoated, 1/16" holes	511551
	Basket assembly, PVC coated, 3/8" (max.) holes	511541
21 *	Plug, quick disconnect	544182
22 *	Fuse holder	532143
	Fuse, 10 Amp	532281
23	Indicator light	532511
24 *	Timer	531041
25	Air gauge	550262
26 †	Media hose, 1/2" x 33"	523081
27 *	Plug, 1 1/4" diameter (3 required)	544381
28 *	Screen assembly (screen, clamp, cap)	140476
29 †	Orifice tip	761921
30 *	Hose assembly, 1/4" x 8" (2 required)	521135
31 †	MH-4 suction gun (See page E22.)	140721
32 *	Door gasket kit (set of 4, 1" x 1", with hole)	526271
33	Nut plate	768161
34	Gun holder	768171
35	Keeper (2 required)	509591
36 †	Media hose, 1/2" x 33"	523081

Item	Description	PART NUMBER
37 †	Hose barb, 1/2" hose x 3/8" NPT	520372
38	Latch (2 required)	509581
39 *	Socket, quick disconnect	510021
40	Nipple, 1/4", close	545912
41	Coupling	544792
42	Bulkhead fitting	544692
43	Lock nut	553292
44	Plug (valve body)	544031
45	Wire tie (2 required)	528521
46	Handle (2 required)	564171
47 *	Plug, 1 1/4" diameter (3 required)	544381
48 *	Solenoid valve	517921
49 *	Hose assembly, 1/4" x 8" (2 required)	521135
	Air filter/regulator, 1/4" NPT	505282
50 *	Repair kit includes diaphragm, O-ring & element	508141

* Essential component to prevent downtime
 † Recommended spare part — consumable wear item

Cabinet Options

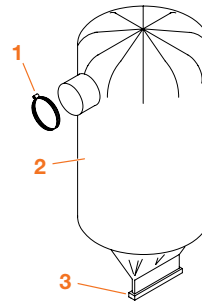
Factory Installed PART NUMBERS	BBO-1	BBO-2
Arbonited basket extends service life.	511541	511541
Blow-off gun assembly removes dust and fines.	140859	140859

Parts: BBO-1 Dust Bag

Guide to Part Numbers

Item	BBO-1 Dust Bag Description	Part Number
1	Clamp, 3", adjustable	520521
2 *	Dust bag	510001
3	Clamp, dust bag closure	520461

* Essential component to prevent downtime



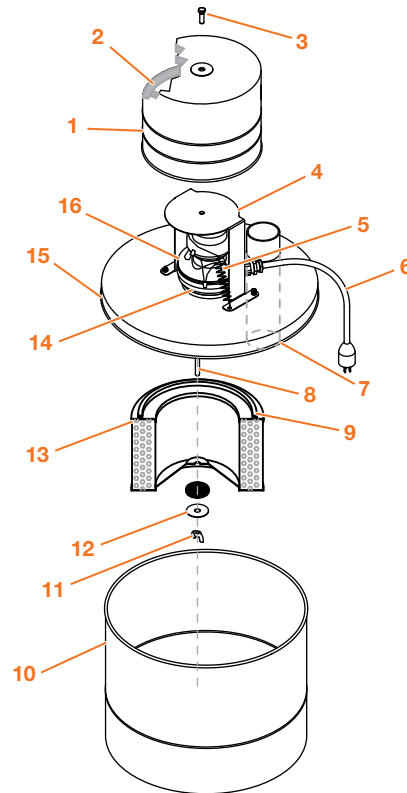
The BBO-1 basket blaster includes the dust bag shown. A DC-16 dust collector (Part Number 117216) detailed below is optional.

Parts: BBO-2 Dust Collector

DC-16 Dust Collector (Part # 117216)

Item	Description	Part#
1	Sound attenuator cover	770962
2	Hush cloth, ½" x 7" x 8¼" (5 pieces)	525051
3	Bolt, hex head, ⅜"-16 x 1¼"	551852
4	Bracket, sound attenuator	772356
5	Spring extension	515741
6	Line cord, 120 V	529601
7	Gasket tape, lid, 3'	800166
8	Threaded rod	770067
9	Gasket	523341
10	Drum, 16 gallon	504016
11	Wing nut, ⅜"-16	553992
12	Flat washer, ⅜"	552892
13 *	Filter cartridge	504771
14	Gasket, fan (two required)	524362
15	Lid weldment	770684
16	Blower, 120 V, 60 Hz, Single phase, 133 CFM	515761

* Recommended spare part—Consumable wear item
 † Essential component to prevent downtime



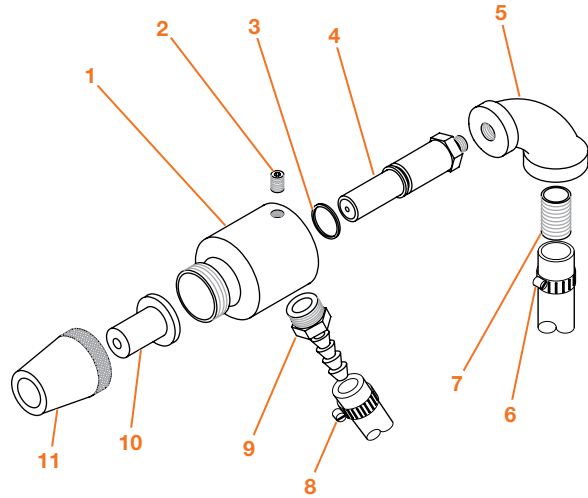


Parts: BBO-1 & BBO-2 Blast Gun

MH-4 Suction Blast Gun

Item	Description	Part#
	MH-4 gun, 1/4" ceramic nozzle, 3/32" air jet (standard)	140721
	MH-4 gun, 5/16" ceramic nozzle, 1/8" air jet	140722
	MH-4 gun, 1/4" Di-Carb™ nozzle, 3/32" air jet	140723
	MH-4 gun, 5/16" Di-Carb™ nozzle, 1/8" air jet	140724
1	Suction head	505331
2	Set screw, 1/4"- 20 x 3/8"	551052
3	O-ring	523891
4 *	Air jet with O-ring, 1/8" (yellow) (standard)	504811
4 *	Air jet with O-ring, 3/32" (orange)	504821
5	Elbow, 1/4" x 1/8"	543912
6	Hose clamp (not included with gun)	521091
7	Nipple, 1/4"	545912
8	Hose clamp (not included with gun)	521091
9	Hose barb, 1/2" x 3/8" MPT	520372
10 *	Nozzle, ceramic, 1/4" (standard)	502661
11	Nozzle adapter (ceramic & Di-Carb nozzles) Nozzle adapter (Boron carbide nozzle only)	504901 504921

* Recommended spare part—Consumable wear item
 † Essential component to prevent downtime



Nozzles for MH-4 Guns

	Diameter	
	1/4"	5/16"
	Part Numbers	
Ceramic (each)	502661	502701
Ceramic (10 pack)	502401	502411
Di-Carb™ (each)	501311	501321
Boron carbide (each)	502101	NA

Boron carbide nozzle requires nozzle adapter, PN 504921

